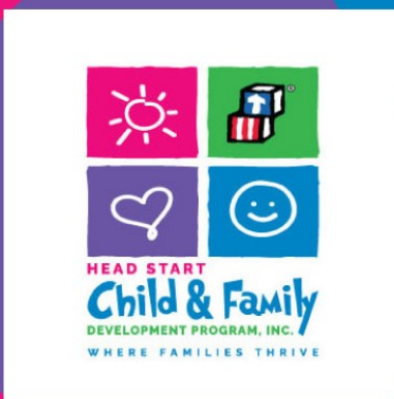




HEAD START CHILD & FAMILY DEVELOPMENT PROGRAM, INC. ANNUAL REPORT

2023-2024



 123 N. Marian Road, Hastings, NE 68901
www.hshn.org - (402)462-4187



MISSION STATEMENT:

TO PROVIDE QUALITY, COMPREHENSIVE SERVICES AND REFERRALS TO CHILDREN AND FAMILIES WITH RESPECT AND DIGNITY.



Five Year Program Goals:

Goal 1: Head Start C&FDP, Inc will implement a succession plan by transitioning, training, and mentoring new upper management.

Goal 2: Head Start C&FDP, Inc. will support and retain staff by implementing Conscious Discipline to support staff with addressing behaviors, maximize COLA and Quality funds towards salaries, and explore other retention opportunities.

Goal 3: Head Start C&FDP, Inc. will explore other funding sources to assist with program funding.



Head Start C&FDP, Inc. Overview

Head Start C&FDP serves both Early Head Start and Head Start children and families in Adams, Clay, Franklin, Hall, Nuckolls and Webster counties.

Our Early Head Start home visitation program provides comprehensive parenting services to 162 prenatal mothers and parents with children under the age of three across our 6 counties. Families can expect a weekly visit of 1.5 hours and 24 socialization meetings per year.

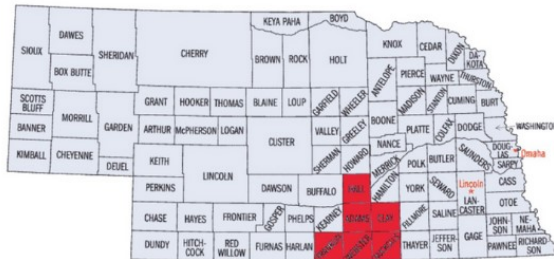
Our Head Start program provides quality comprehensive pre-kindergarten center based services to 300 low-income children ages 3-5 and their families across our 6 counties. We have partnership classrooms in Clay, Nuckolls, Franklin, and Webster counties.

Our program serves families with children who have a verified disability through the State's Rule 52 from zero to three years of age with Services Coordinators. The services are provided free of charge for all eligible families. Services Coordinators act as case managers for the family and child, and as an advocate for services.

The Sixpence Child Care Partnership Program and Infant Toddler Initiative provide support services, training and funding to child care centers and homes in Hall County.

Migrant Education Program Services provided services to 396 children ages 3-21 and their families. These services help migratory children and youth meet high academic challenges by overcoming the obstacles created by frequent moves, educational disruption, cultural and language differences, and health-related problems

As part of our partnership with Grand Island Public Schools, we provided 31 prenatal and post-natal teenage mothers parenting education through our home based Sixpence program.



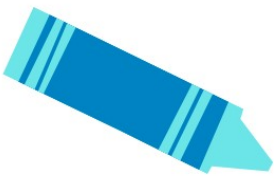
\$6,334,879.00
Federal Funding

462
Pregnant Women/Children
Funded Slots

4
Partner School Districts

Central Office:
 Kathleen Riley, Executive Director

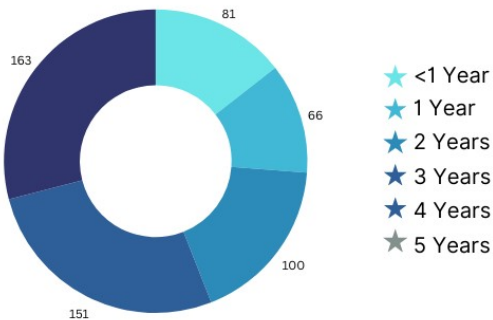
123 N. Marian Road, Hastings NE 68901
 Phone: 402-462-4187 * Fax: 402-462-4568
www.hshn.org



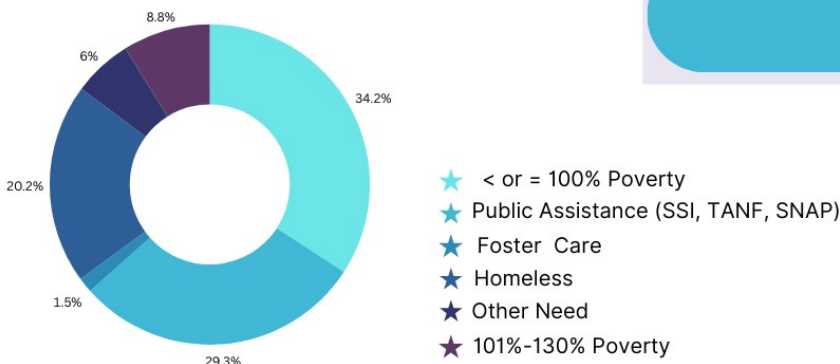
Enrollment

	Funded	Served
Pregnant Women (EHS)	(Part of 162 below)	29
Infants & Toddlers: 0-3 (EHS)	162	224
Children: 3-5 (HS)	300	337
TOTAL:	462	590

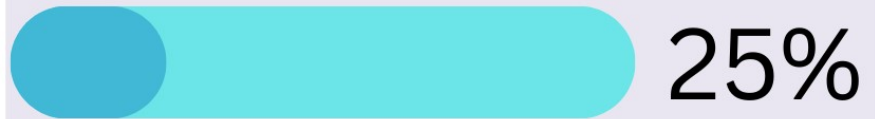
**Children by Age
(at time of enrollment)**



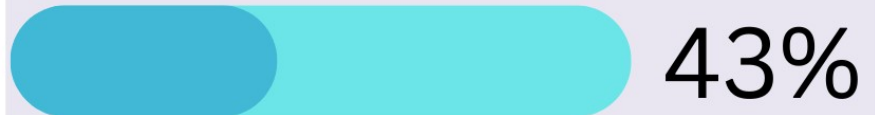
**Primary Eligibility
(at time of enrollment)**



Verified Children with IFSP/IEP



Hispanic/Latino



Dual Language Learners

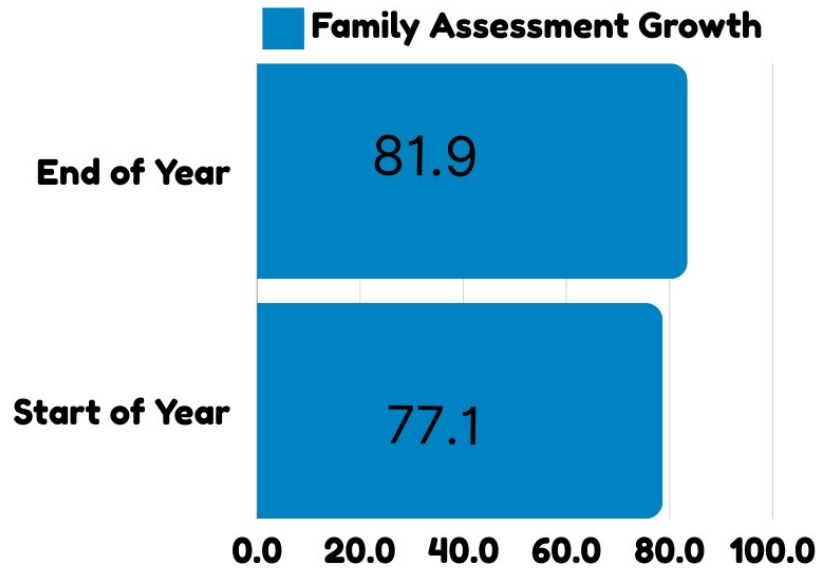




Our Families

FAMILIES SERVED	503
• Two Parent/Guardian	61%
• Single Parent/Guardian	39%
• Primary language in the home is English	63%

Our program uses the MARC Family Assessment to evaluate family strengths/needs at the beginning and end of the program year. The lowest possible score for a family is 21 points and the highest possible score is 105 points. The agency saw a growth of 4.8 points among the families over the year.



Employment, Job Training, & School

(at time of enrollment)

- At least one parent/guardian is employed, in job training, or in school **76.5%**



Health & Dental Services



The agency provides all staff with the opportunity to participate in the EAP program, Mary Lanning Wellness Event, and other wellness activities throughout the year.

At the end of program participation, children with...

EHS

HS

Health Care



- Health Insurance
- An ongoing source of continuous, accessible health care
- Up-to-date age-appropriate preventative and primary health care

95%	93%
99%	97%
97%	98%

Dental Care



- Continuous, accessible dental care provided by a dentist
- Up-to-date age-appropriate preventative/primary oral health care or received preventative treatment

60%	87%
57%	96%

Immunizations



- Brought up to date on immunizations

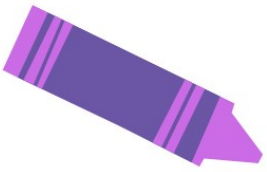
100%	98%
------	-----

At the end of program participation, pregnant women with...



- Health Insurance
- An ongoing source of continuous, accessible health care
- Prenatal care during pregnancy
- Education on breast feeding, nutrition, fetal development, risks of alcohol/drugs/smoking

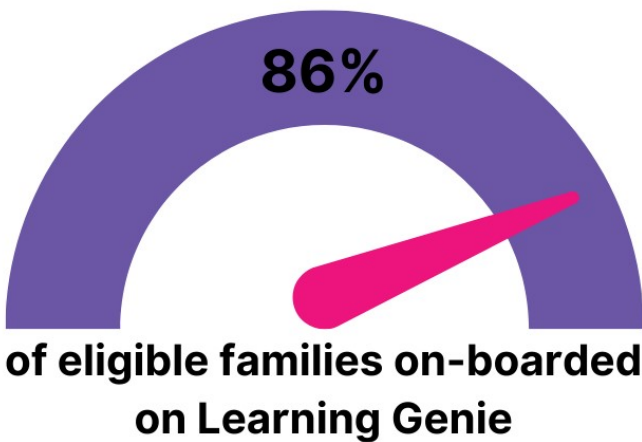
97%
100%
100%
100%



Parent & Family Involvement

Our program uses Learning Genie to assist in communicating with families & documenting In-Kind:

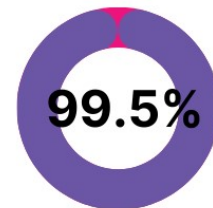
- Two-way Messaging removes language barriers and enables instant communication with families at any time.
- Auto-Translation with over 100+ languages removes language barriers and ensures equity in education.
- Text to Speech in the parents' native language makes it even easier for families with reading limitations.
- Families can easily access the at-home learning activities assigned by teachers and log In-Kind time instantly with a few taps. Learning media and video book watch time can also be added to the In-Kind report.
- Teachers can assign at-home activities digitally. Easy to review the activities submitted by parents; Digital signatures captured. At home & volunteer activities, and mileage.
- Administrators use the dashboard data to easily review parent data. A monthly In-Kind report is downloaded to enter into Child Plus and we set up our In-Kind goal, then track the completion progress of In-Kind by site.



Staff recruiting at local events

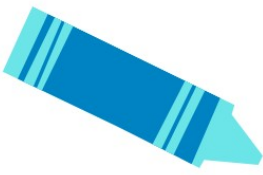


Parent Survey Results



Very satisfied with the program

43.7% of staff are current or former parents of a HS/EHS child !

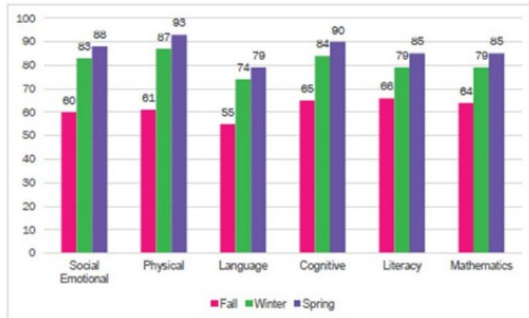


Child Outcomes

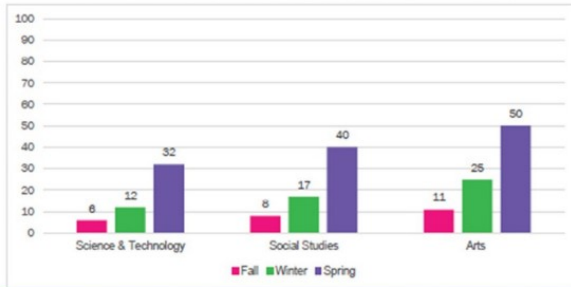


Head Start Outcomes 2023-2024

Percentage of Children Meeting or Exceeding Age Expectations



Percentage of Children Meeting Program Expectations



There were 295 children included in the fall data, 289 children from the winter data, and 294 children from spring data from 28 classrooms. This report data is from the entire school year.

The children in our Head Start program demonstrated growth in all areas over the school year. The lowest scoring area was Language, we have implemented Heggerty and Visual Phonics into the classrooms.

The program had a high percentage of EHS children meeting or exceeding age expectations. The program has implemented PICCOLO to help parents understand how they help their child's development through their interactions.

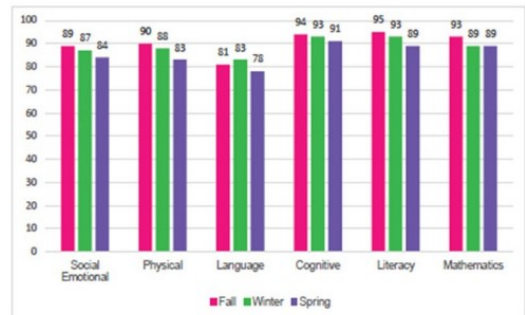
Our program uses TS Gold to assess children on an on-going basis. All Head Start children are assessed and reported on for 3 periods and all EHS children for 4 periods.

Our School Readiness Mission Statement is to "Improve child outcomes in order to close the achievement gap".

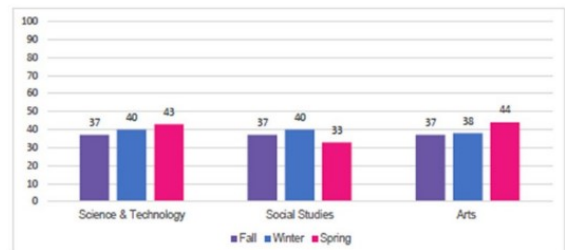


Early Head Start Outcomes 2023-2024

Percentage of Children Meeting or Exceeding Age Expectations



Percentage of Children Meeting Program Expectations

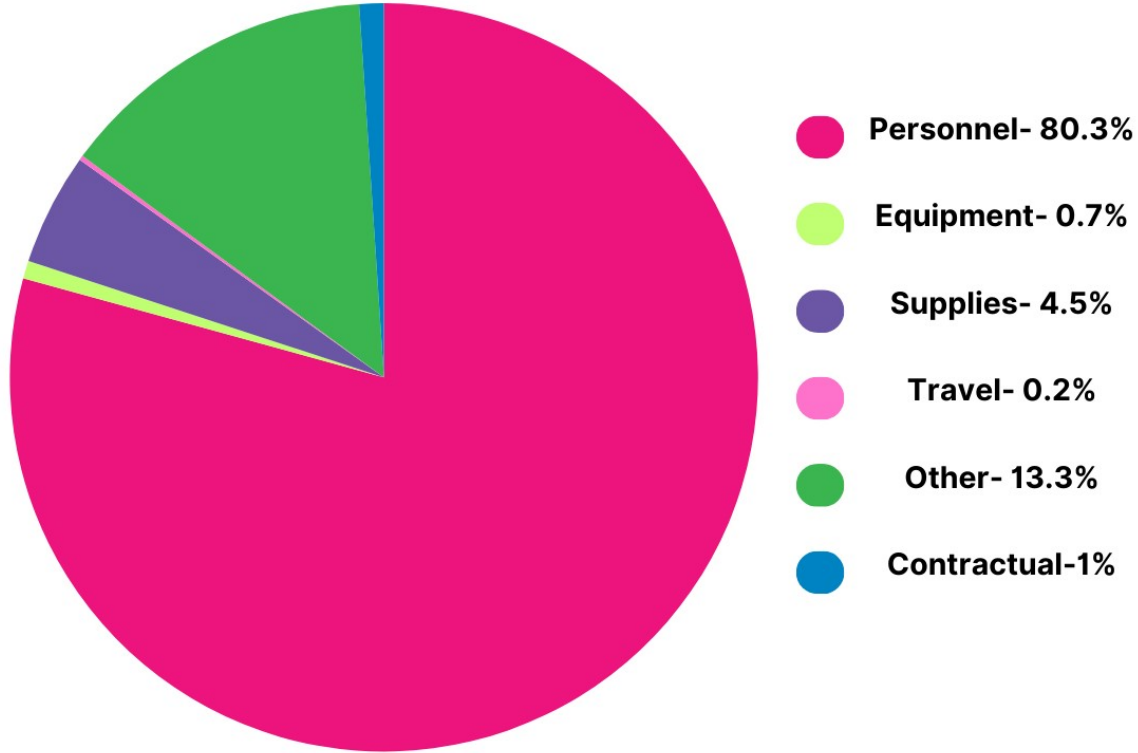


There were 143 children included in the fall data and 143 children included in the winter data. There were 149 children included in the Spring data. This report includes fall and winter data.



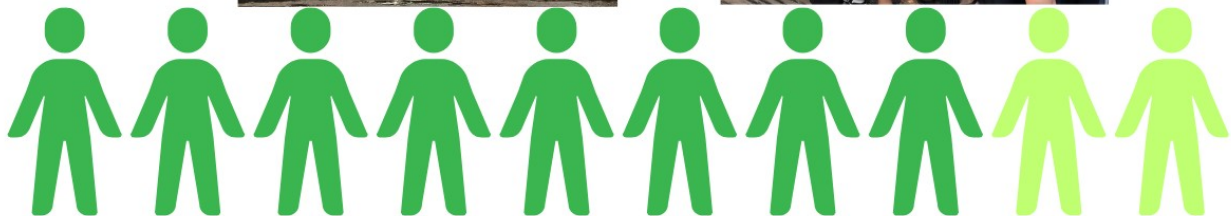
Financial Report

Overall HS/EHS budget for 2023-2024 was \$6,334,879.00



The annual audit was conducted by CORE CPAs with no findings.

For more information contact the Fiscal Officer.



86% of the 726 volunteers were current or former parents in the program contributing to the generation of \$2,480,598.66 dollars of In-Kind.



Accomplishments



Migrant had a busy summer! The third and fourth graders had an amazing time playing with water, walking a trail, and completing an obstacle course.

The first and second graders took a field trip to the Crane Center! The Preschoolers had a blast at the Lincoln Park.

Migrant also had its FIRST year of summer school in Superior! There were 12 students attending from surrounding communities.

Retirement of Long Term Leaders!

Head Start CFDP, Inc.'s lost its long time Director and Fiscal Officer.

Deb Ross was acting Director for over 31 years and Shereen Shafer was acting Fiscal Officer for over 38 years. The agency celebrated their retirement and wish them well in their next adventures!



Congratulations Nebraska Head Start Association 2024 Award Winners



Bobbi Mason
Nebraska Head Start Family Leader of the Year



Deb Ross
Nebraska State Children's Champion



Niki Gemar
Nebraska Head Start Administrator of the Year